



**Kim & FORT**  
**ENGINEERING**

# Company Profile

*Bring World Together Through  
Engineering.*



**Contact Us:**

+ (255) 713 105 520  
+ (255) 684 304 594



**Email Us:**

info@kimfortengineering.co.tz  
sales@kimfortengineering.co.tz

[kimfortengineering.co.tz](http://kimfortengineering.co.tz)



"work with purpose, grow with passion and succeed together.  
At Kim & Fort Engineering, every effort counts, every challenge is an  
opportunity and every success is shared. Keep pushing forward"

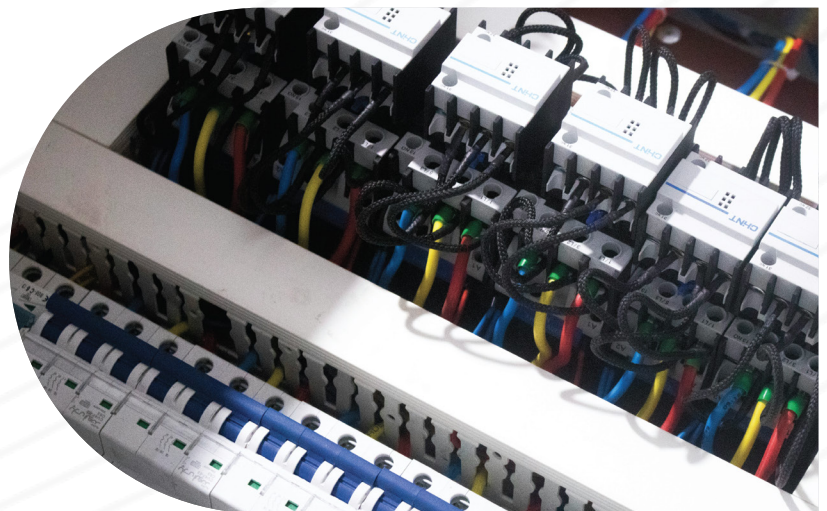
# Company Overview



We are a leading provider of electrical material & services, specializing in design, installation & maintenance for commercial, industrial and residential projects based in Dar es Salaam, Tanzania.

Our expertise spans electrical systems, HVAC, Plumbing, Automation and Control Systems. We prioritize safety, efficiency & high quality workmanship; offering tailored solutions to meet diverse clients needs. With a team of skilled professionals committed to innovation, we deliver reliable, cost effective results on time and preferably within budget.

*"Empowering your spaces with top-tier electrical and mechanical solutions designed, installed, and maintained for safety, efficiency, and excellence."*



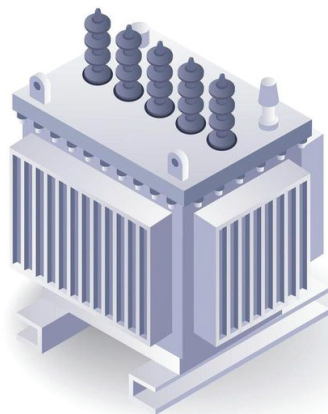
# About Our **Company**

We are integrators: Our strengths & skills in Power transmission, distribution, Industrial automation & Machinery, Refrigeration (HVAC), Medical Technology and Project Management allow us to deliver complete solutions to complex problems.

Our clients tell us that one of the best things about working with us is that we are able to adopt to the business needs and information flow of the companies we work for, meaning we can offer value and services at any point in the engineering process.



*Refrigeration  
(HVAC)*

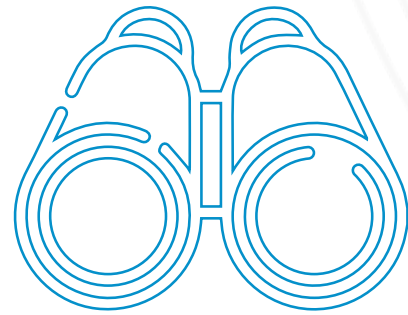


*Transformer*

The Kim & fort Engineering Ltd has provided multi discipline Engineering services and products to industrial Clients. Our company Fosters an innovative problem solving Environment that presents fast and flexible responses to client needs. The highly qualified team at Kim & fort can offer complete engineering services and providing of any industrial automation product.

# Vision

To be a trusted brand in the electrical industry recognized in Africa for innovation, reliability and excellence providing material & services. Empowering our clients to achieve sustainable and efficient solutions.



*"Empowering Africa with innovation, reliability, and excellence in the electrical industry."*

*"Building lasting relationships through high-quality, reliable, and sustainable engineering solutions across Africa."*

# Mission



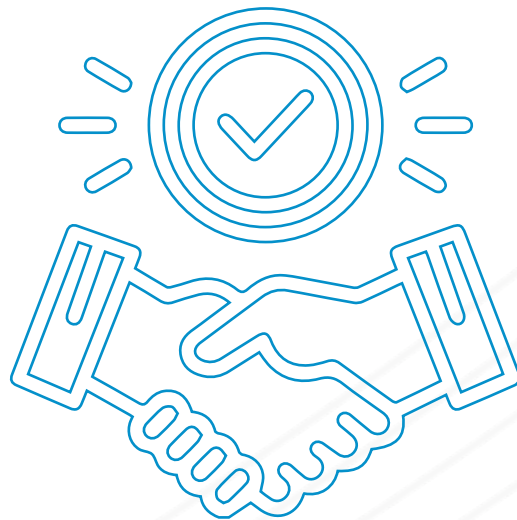
Mission Providing superior high quality, efficient and reliable engineering solutions across Africa. We aim to exceed clients expectations, innovative solutions with advanced technology. Our mission is to build lasting relationships with our clients, promote sustainable development and contribute positively to the community.



# Why Choose Us!

## CUSTOMER VALUE

We are dedicated to delivering the highest quality of workmanship, and by choosing Kim & fort Engineering, you will have an experienced team of the best engineers, technicians, and other staff working to meet all your requirements with great customer service before, during, and after the job has been completed. Put Kim & fort Engineering Co. Ltd to the test, you won't be disappointed.



**"Our commitment to service is to  
Delivering Results, Exceeding Expectations."**

”

# Our Core Value

■ To improve our relationship management techniques, strategy, and vision.

Integrity is demonstrated by focusing to, recognizing, and meeting client demands with high-quality, timely services and goods at a fair price



## Integrity

We employ the highest ethical standards and believe that our continued success is based upon sustaining the relationships that keep our business growing. We believe that open and honest communication is vital to the lasting success of the firm.



## Quality

We deliver superior engineering solutions that meet global standards, ensuring quality, innovation, and reliability. With advanced technology and expertise, we provide sustainable, high-performance solutions that exceed client expectations and drive progress in the industry.



## Innovation

We are committed to continuous improvement by embracing and adopting the latest technology. Through innovation and advanced solutions, we enhance efficiency, reliability, and sustainability to meet evolving industry demands and client expectations.



## Customer Satisfaction

We are dedicated to not only achieving, but exceeding, client expectations. Through a strong commitment to the above values, Rempel Engineering strives to set ourselves above the rest.



# Our Services

## Electrical Services:

- ◆ **Generator Services & Maintenance:**  
Regular servicing and repairs to ensure reliable backup power.
- ◆ **Electrical Fault Diagnosis & Repair:**  
Troubleshooting and fixing electrical system issues.
- ◆ **Transformer Installation & Maintenance:**  
Ensuring proper voltage regulation and system stability.
- ◆ **Power Factor Correction (PFC) Panels:**  
Installation and optimization to reduce electricity costs and improve efficiency.
- ◆ **Industrial & Commercial Electrical Installations:**  
Wiring, panel installations, and power distribution for businesses.
- ◆ **Energy Audits & Efficiency Improvements:**  
Assessing and upgrading systems to minimize power wastage.

## HVAC (Heating, Ventilation & Air Conditioning) Services:

- ◆ **Air Conditioning Installation & Servicing:**  
Supply, installation, and maintenance of cooling systems.
- ◆ **Ventilation System Installation:**  
Ensuring proper airflow and air quality control.
- ◆ **HVAC System Upgrades & Energy Optimization:**  
Enhancing efficiency to reduce energy consumption.
- ◆ **HVAC System Design & Installation:**  
Customized solutions for commercial and industrial buildings.
- ◆ **Chiller Maintenance & Repairs:**  
Servicing industrial and commercial cooling systems.
- ◆ **Cooling Tanks Installation & Services:**  
Cooling tank installation, maintenance, repair, and system optimization.



# Services



## Power Factor & Load Balancing:

If required, we check for power factor correction to improve energy efficiency and ensure balanced load distribution across phases.

## Short Circuit & Overload Protection:

The panel components, such as circuit breakers and fuses, are tested to confirm they will function correctly in case of overload or short circuits.

## Energy Audits & Efficiency Improvements

### Voltage & Current Measurement:

The engineer is using a digital multimeter to check voltage levels across different phases and neutral connections, ensuring they are within the required range.

### Insulation & Continuity Testing:

By testing insulation resistance, we confirm that no leakage current can cause electrical hazards. Continuity tests ensure all wiring connections are intact.

### Earth & Grounding Verification:

Proper grounding is crucial to prevent electric shocks and protect equipment. The engineer ensures the earth resistance is within safe limits.

We avoid malfunctions, minimize downtime, and guarantee a steady power supply for our customers by carrying out these electrical safety inspections. Before the system is activated, any identified problems are fixed to ensure efficiency, safety, and dependability.





## HVAC (Heating, Ventilation & Air Conditioning) Services:

### Refrigerant Pressure Check:

The technician measures high and low refrigerant pressures to ensure optimal system performance and prevent compressor strain.

### Evaporator & Condenser Coil Cleaning:

Dirt and debris accumulation reduce heat exchange efficiency. Cleaning the coils improves cooling capacity and energy efficiency.

### Electrical Components Inspection:

Checking relays, capacitors, contactors, and wiring ensures proper voltage supply and prevents electrical failures.

### Thermostat Calibration & Airflow Testing:

The system's thermostat is adjusted for accurate temperature control, and airflow measurements confirm proper distribution.

### Drain Line & Filter Maintenance:

Clearing drain lines prevents water leakage issues, while replacing or cleaning filters enhances indoor air quality and system longevity.

### Compressor & Fan Motor Performance Evaluation:

The technician inspects the compressor amperage, fan motor operation, and belt tension to prevent overheating and premature wear.

This all-inclusive AC service guarantees maximum cooling effectiveness, lower energy usage, and longer equipment life, reducing unplanned malfunctions and increasing customer satisfaction.



## Electrical Turbine Power House Fault Diagnosis And Repair



### **Electrical Output & Load Testing:**

The engineer measures voltage, current, and power output to verify that the turbine is generating the expected power and operating within safe limits.

### **Generator & Insulation Resistance Testing:**

The insulation of the generator windings is tested using a megger to prevent electrical faults and ensure safe operation.

### **Bearing & Shaft Alignment Inspection:**

Proper shaft alignment and bearing lubrication reduce friction, prevent overheating, and extend the turbine's lifespan.

### **Hydraulic Flow & Pressure Check:**

The water flow rate and pressure at the penstock and runner blades are analyzed to optimize efficiency and prevent cavitation.

### **Cooling & Lubrication System Maintenance:**

The oil levels, cooling system, and seals are inspected to prevent leaks and ensure smooth mechanical operation.

### **Control Panel & Protection System Testing:**

The circuit breakers, voltage regulators, and automatic shutdown mechanisms are tested to prevent overloads and faults.





## Transformer Installation & Maintenance

### Megger Test (Insulation Resistance Test):

A megohmmeter (Megger) is used to measure the insulation resistance between windings and between windings and the transformer core. This helps detect moisture ingress, insulation breakdown, or contamination, which can lead to short circuits or dielectric failure. A low resistance reading indicates insulation deterioration, requiring corrective action.

### Winding Resistance Test:

The team uses a micro-ohmmeter to measure the DC resistance of primary and secondary windings. This helps detect issues such as loose connections, turn-to-turn faults, or uneven resistance, which can cause heating and power losses. The test ensures all windings have balanced resistance values within the manufacturer's specifications.

### Additional Transformer Health Checks:

#### Oil Dielectric Test:

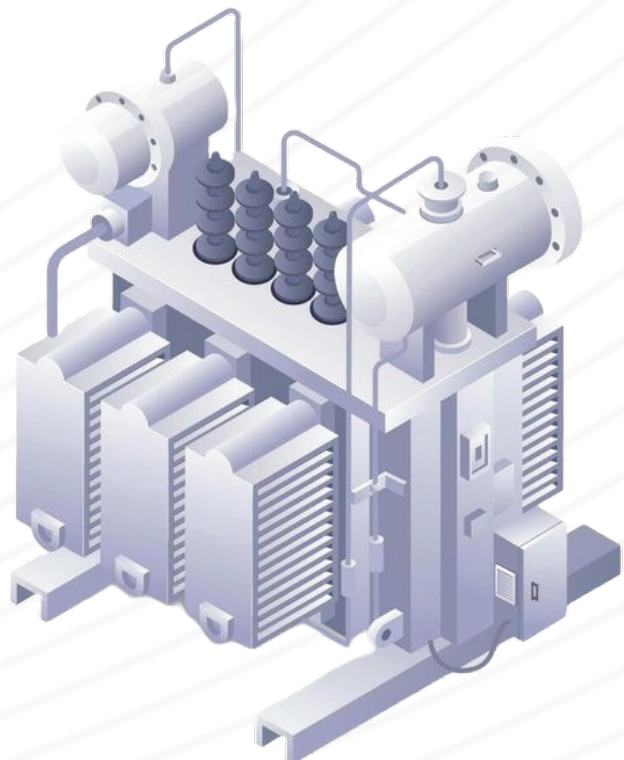
If applicable, transformer oil is tested for breakdown voltage, ensuring proper insulation properties.

#### Voltage & Load Testing:

The transformer is checked for proper voltage regulation and load balance to ensure stable power delivery.

#### Thermal Inspection:

Infrared thermography may be used to detect hotspots that indicate overheating or poor electrical contacts.



# List of Products

1

## Power Generation:

- Generators (Diesel, Gas, Solar, Hybrid)
- Automatic Voltage Regulators (AVR)
- Generator Control Panels
- Synchronizing Panels
- Fuel Tanks & Fuel Management Systems
- Exhaust Systems & Silencers
- Alternators
- Battery Chargers for Generators

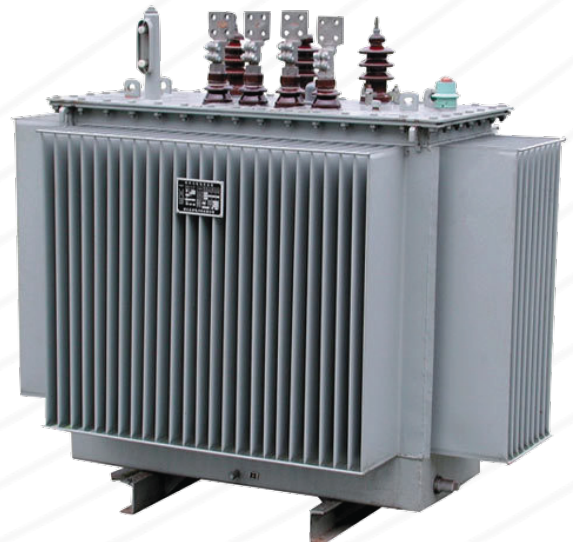


Power Generator

2

## Power Distribution Equipment:

- Transformers (Step-up & Step-down)
- Switchgear (LV & HV)
- Circuit Breakers (MCB, MCCB, ACB, VCB)
- Fuses & Fuse Holders
- Distribution Boards & Panels
- Power Factor Correction (PFC) Panels
- Automatic Transfer Switches (ATS)
- Busbars & Busbar Trunking Systems



Transformer

3

### Motors & Drives:

- Electric Motors (Induction, Synchronous, DC)
- Variable Frequency Drives (VFDs)
- Soft Starters
- Motor Starters (DOL, Star-Delta)

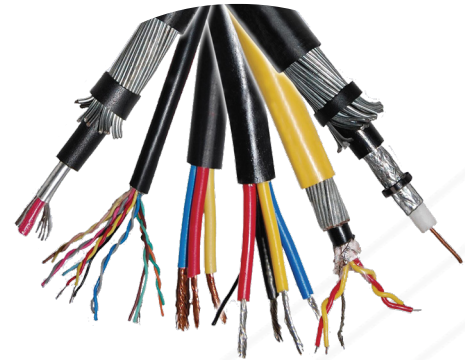


Variable Frequency Drives (VFDs)

4

### Cables & Wiring Accessories:

- Power Cables (Armored & Unarmored)
- Control Cables
- Flexible Cables
- Cable Trays & Ladders
- Cable Glands & Lugs
- Conduits & Accessories



Power Cables

5

### Control & Automation Components:

- Programmable Logic Controllers (PLCs)
- Human Machine Interfaces (HMIs)
- Industrial Relays (Electromagnetic & Solid-State)
- Contactors
- Sensors (Proximity, Temperature, Pressure)
- Timers & Counters
- Encoders



Programmable Logic Controllers (PLCs)

6

## Measurement & Monitoring Instruments:

Digital Multimeters  
Clamp Meters  
Power Analyzers  
Energy Meters  
Insulation Resistance Testers  
Infrared Thermometers



Energy Meter

7

## Lighting & Fixtures:

Industrial LED High Bay Lights  
Explosion-Proof Lighting  
Emergency Exit Lights  
Floodlights



Industrial LED High Bay Lights

8

## Safety & Protection Devices:

Surge Protection Devices (SPDs)  
Earthing & Lightning Protection Systems  
Overvoltage & Undervoltage Protectors  
Fire Alarm Systems  
Industrial Sirens & Flashers



Surge Protection Devices (SPDs)

9

## Batteries & Power Backup Systems:

Uninterruptible Power Supplies (UPS)  
Industrial Batteries (Lead Acid, Lithium-Ion)  
Inverters  
Solar Panels & Controllers



Uninterruptible Power Supply (UPS)

10

## Heating & Cooling Systems:

Industrial Heaters  
Cooling Fans & Blowers  
HVAC Control Systems



HVAC

11

## Industrial Connectors & Accessories:

Industrial Plugs & Sockets  
Terminal Blocks  
Junction Boxes



Industrial Connectors



# Among of our Clients



WE PROVIDE THE LATEST, MOST RELIABLE PRODUCTS TO  
SUPPORT YOUR ENGINEERING PROJECTS WITH EXCELLENCE.



**Kim&FORT**  
**ENGINEERING**



**Contact Us:**

+ (255) 713 105 520  
+ (255) 684 304 594



**Email Us:**

info@kimfortengineering.co.tz  
sales@kimfortengineering.co.tz

[kimfortengineering.co.tz](http://kimfortengineering.co.tz)